

# Academic Medicine and the 'Great Resignation'

2022 Council of Deans Spring Meeting  
March 25, 2022

---

Candice Chen, MD MPH

Associate Professor of Health Policy & Management

Fitzhugh Mullan Institute for Health Workforce Equity

Milken Institute School of Public Health

George Washington University

Fitzhugh Mullan  
Institute for Health  
Workforce Equity

---

THE GEORGE WASHINGTON UNIVERSITY

---

Trust, Professionalism  
& the Social Contract

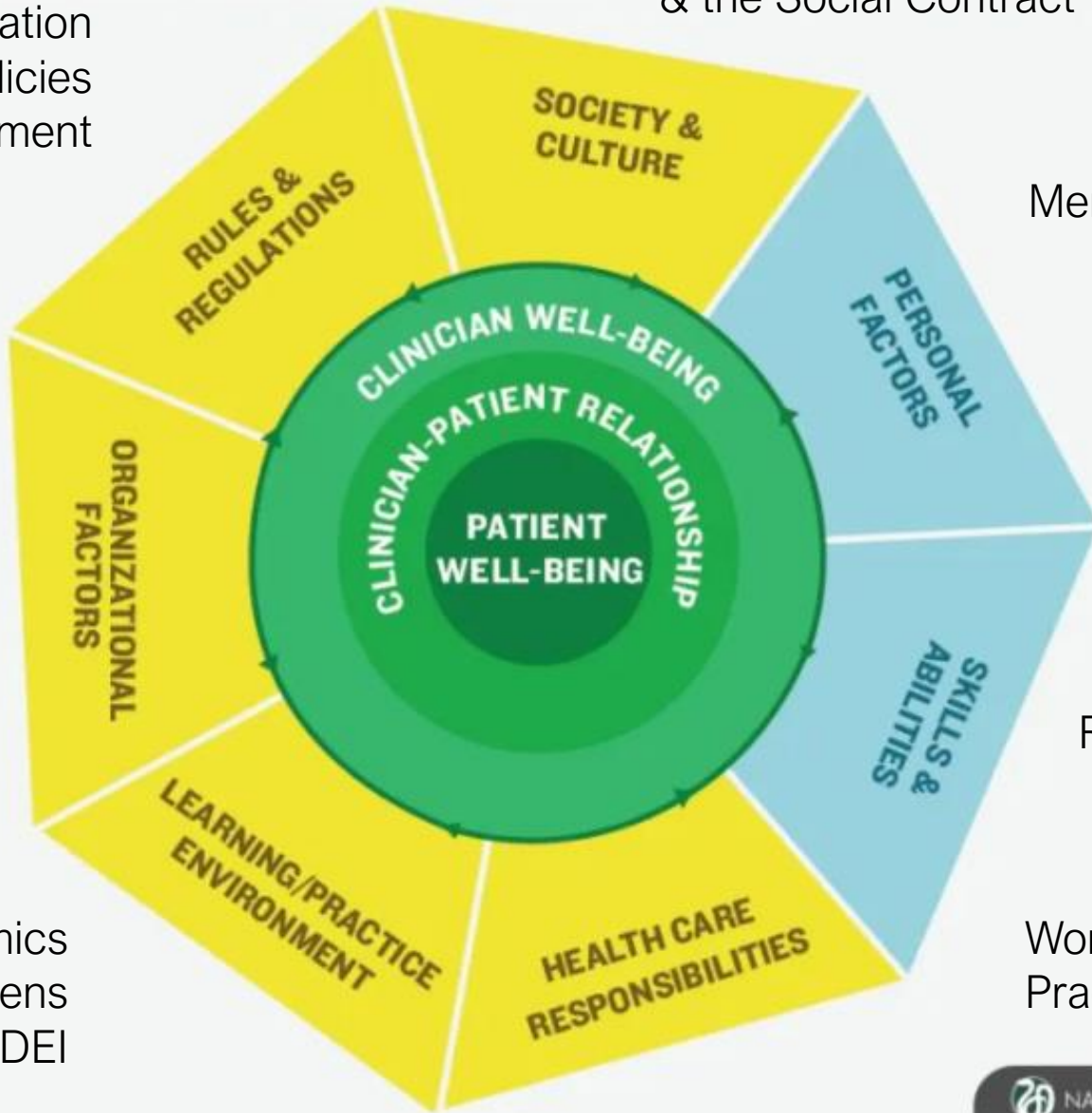
Accreditation  
Federal & State Policies  
Payment Environment

Mental Health Supports

Social Determinants  
Career Development

Resilience Training

Workload  
Practice Resources



Leadership  
Community Engagement  
Organization Policies

Team Dynamics  
Administrative Burdens  
Discrimination & DEI

# What Serena Williams's scary childbirth story says about medical treatment of black women

Black women are often dismissed or ignored by medical care providers. Williams wasn't an exception.

By P.R. Lockhart | Jan 11, 2018, 4:40pm EST



## Were These Doctors Treating Pain or Dealing Drugs?

The Supreme Court will hear from two convicted pill mill doctors in cases that could have significant implications for physicians' latitude to prescribe addictive painkillers.



At issue is the reading of the language of the Controlled Substances Act of 1970, which allows doctors to dispense certain potentially addictive but medically necessary drugs. Stuart Isett for The New York Times

### **TheUpshot**

THE NEW HEALTH CARE

## A 'Rare Case Where Racial Biases' Protected African-Americans

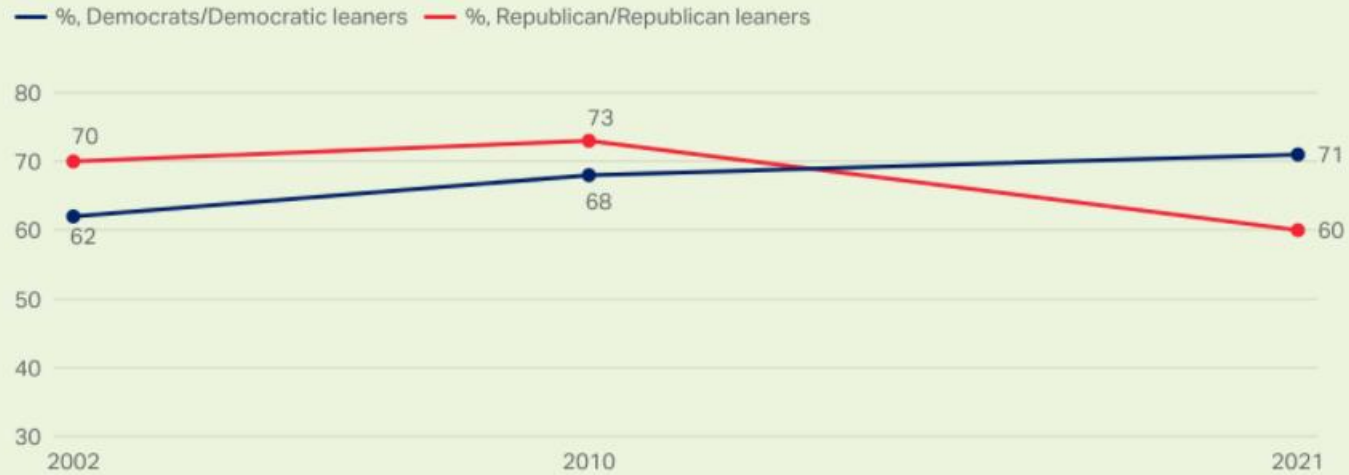
Fewer opioid prescriptions meant fewer deaths (possibly 14,000), but the episode also reveals how prevalent and harmful stereotypes can be, even if implicit.

# Republicans Less Trusting of Doctor's Advice Than in the Past

BY JEFFREY M. JONES

## Confidence in Accuracy of Important Medical Advice From Your Doctor, by Political Party

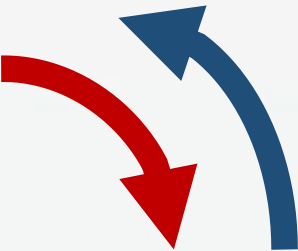
Figures are the percentage who say they are confident in the accuracy of important medical advice from their doctor



GALLUP



Trust, Professionalism  
& the Social Contract

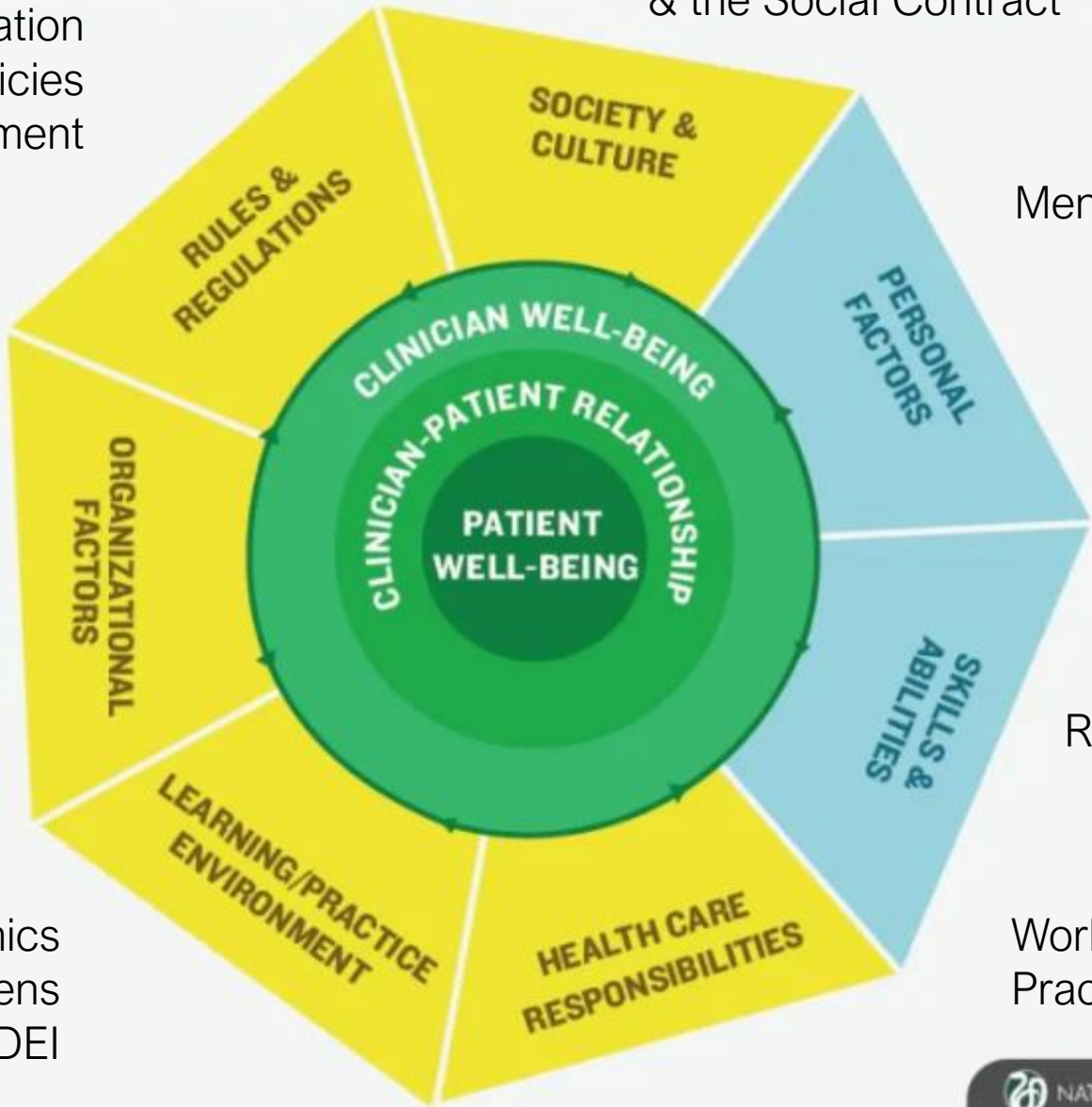


Mental Health Supports

Social Determinants  
Career Development

Resilience Training

Workload  
Practice Resources



Accreditation  
Federal & State Policies  
Payment Environment

Leadership  
Community Engagement  
Organization Policies

Team Dynamics  
Administrative Burdens  
Discrimination & DEI

# Opportunities: Rebuild Trust

---

High Need Health  
Care Workers

Rural &  
Underserved  
Communities

Dismantling Health  
Disparities

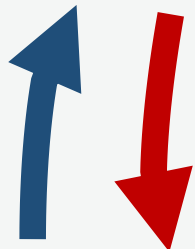


Align Mission  
with Values

Reduce  
Burnout

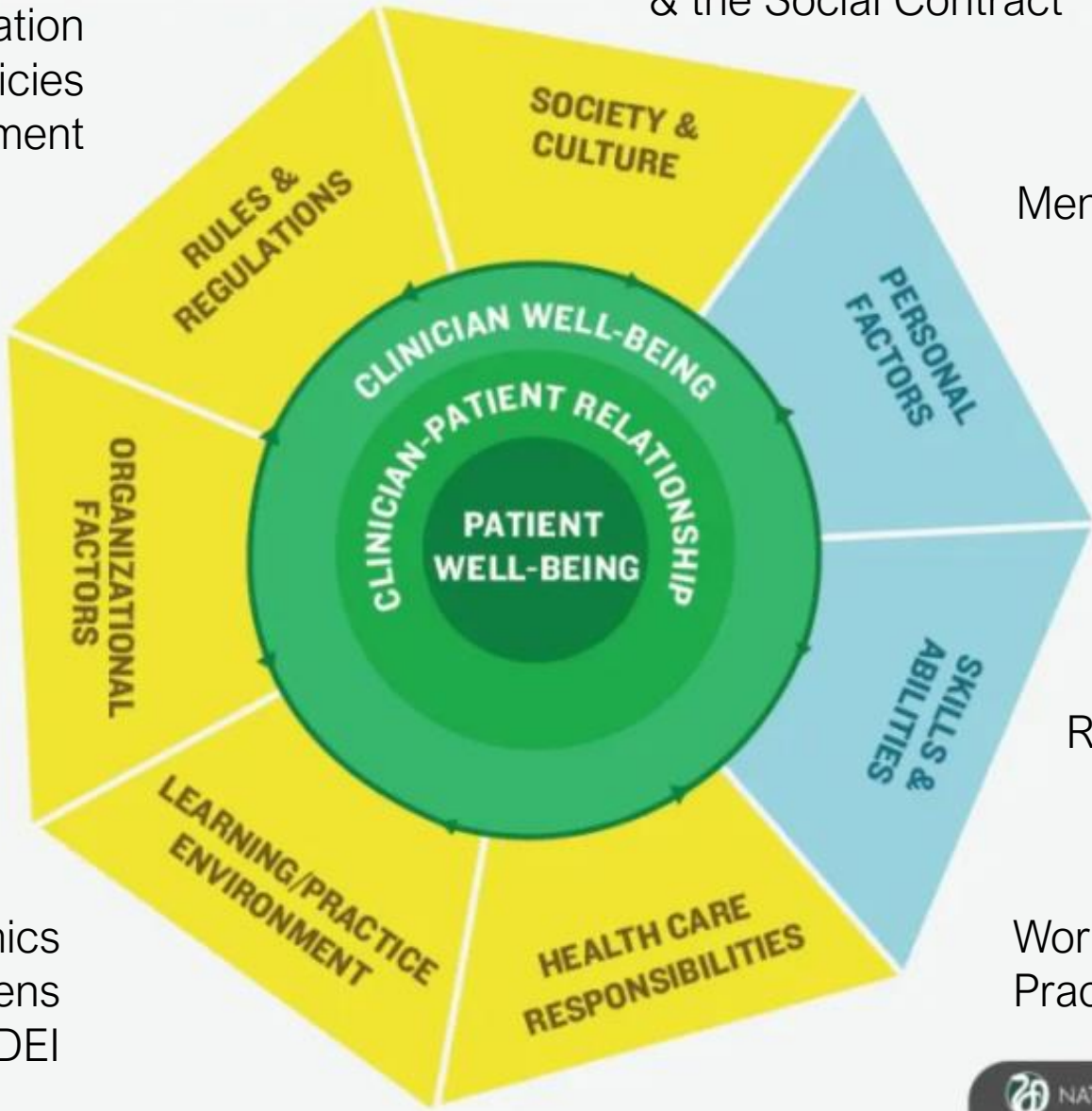
Trust, Professionalism  
& the Social Contract

Accreditation  
Federal & State Policies  
Payment Environment



Leadership  
Community Engagement  
Organization Policies

Team Dynamics  
Administrative Burdens  
Discrimination & DEI



Mental Health Supports

Social Determinants  
Career Development

Resilience Training

Workload  
Practice Resources



The background of the slide is a blurred image of the Hall of Justice from the Super Friends intro. It features a large, ornate archway with the words 'HALL OF JUSTICE' inscribed on it. In the foreground, there is a large, glowing orange and yellow flame-like object. The scene is set in a grand, classical-style building with columns and arches.

# COUNCIL OF DEANS

---

What will you  
prioritize and  
advocate for?

*Health Workforce policy is increasingly  
a health equity battlefield.*

- Fitzhugh Mullan

Fitzhugh Mullan  
Institute for Health  
Workforce Equity

---

THE GEORGE WASHINGTON UNIVERSITY

---

Candice Chen, MD MPH

E-mail: [cpchen@gwu.edu](mailto:cpchen@gwu.edu)

Website: <https://www.gwhwi.org/>